

**CITY OF GUNNISON - Sales & Use Tax Comparisons
By Selected Business Sectors**

**05/07/12
03:10 PM**

	January	February	March	April	May	June	July	August	September	October	November	December	Total	
Apparel/Clothing Stores-1														
2007	2,759	3,007	3,783	3,311	4,035	4,415	8,314	6,911	6,264	5,280	3,662	6,583	58,325	
2008	2,589	2,816	3,190	3,148	4,157	5,431	8,130	6,905	5,747	4,963	3,086	4,910	55,070	-5.58%
2009	2,199	2,072	3,120	2,785	3,652	4,443	7,421	6,083	5,134	4,685	2,928	5,123	49,645	-9.85%
2010	2,408	2,374	3,281	2,365	3,746	5,175	7,393	5,776	5,031	4,502	2,979	3,939	48,968	-1.36%
2011	1,853	1,955	3,233	2,714	3,536	5,252	7,684	5,597	5,387	3,517	2,676	4,815	48,219	-1.53%
2012	2,271	2,201	2,833										7,305	-84.85%
Bldg Mat'l & Trades-2														
2007	11,354	8,756	12,498	18,852	17,081	20,619	20,613	18,452	17,738	18,431	13,801	9,929	188,124	
2008	8,981	6,933	11,520	11,406	15,334	17,876	18,386	17,939	17,192	13,656	10,477	9,915	159,615	-15.15%
2009	6,742	5,663	7,786	8,636	11,475	13,282	14,126	12,428	15,671	12,467	7,861	12,163	128,300	-19.62%
2010	8,639	8,651	10,473	8,184	8,620	14,027	12,151	12,045	12,350	11,784	10,183	12,046	129,152	0.66%
2011	4,475	5,122	7,210	7,271	9,594	14,438	11,635	12,322	14,032	13,323	8,292	10,762	118,475	-8.27%
2012	5,745	6,169	5,520										17,434	-85.28%
Gas/Convenience Stores-3														
2007	8,182	7,498	10,160	8,756	6,860	10,642	11,902	11,983	11,778	9,259	8,247	10,471	115,738	
2008	8,885	9,316	13,036	7,799	8,257	10,548	9,306	14,657	11,206	9,119	7,242	8,643	118,014	1.97%
2009	9,736	7,968	9,538	5,914	7,749	11,398	14,303	13,377	10,652	8,946	8,054	10,171	117,805	-0.18%
2010	8,139	8,552	9,232	6,773	7,165	9,791	15,096	12,297	10,931	9,376	8,732	10,767	116,851	-0.81%
2011	10,871	10,709	14,276	7,700	7,531	11,088	15,742	13,950	12,719	8,832	8,080	14,796	136,293	16.64%
2012	8,887	10,456	11,151										30,495	-77.63%
Dept & Hardware Stores-4														
2007	41,092	35,678	41,283	40,818	57,961	69,435	71,151	66,828	52,645	52,945	46,110	58,735	634,679	#DIV/0!
2008	39,834	34,894	37,788	35,236	51,225	66,325	66,773	60,754	52,037	47,697	43,390	51,913	587,867	-7.38%
2009	35,186	30,570	35,402	36,752	50,288	60,352	65,569	60,331	50,071	45,591	41,494	50,428	562,034	-4.39%
2010	34,193	31,732	36,349	34,342	49,226	65,116	68,543	60,553	50,487	45,852	45,260	51,568	573,218	1.99%
2011	35,342	32,102	35,398	34,777	46,601	64,959	66,966	61,635	53,477	45,657	43,722	49,855	570,489	-0.48%
2012	33,307	30,853	36,567										100,727	-82.34%
Furniture/Appliance Stores-5														
2007	2,211	2,634	3,879	2,077	2,715	11,813	3,868	3,659	3,479	2,025	2,006	3,552	43,919	
2008	1,705	1,285	1,853	1,652	2,152	2,855	3,173	4,135	2,455	1,195	2,060	2,992	27,510	-37.36%
2009	887	948	1,323	907	1,025	1,903	1,718	1,508	1,592	1,253	724	1,099	14,889	-45.88%
2010	975	755	1,519	591	512	1,610	2,010	1,698	1,080	973	508	1,558	13,790	-7.38%
2011	899	633	1,091	1,560	1,313	1,445	2,164	2,357	1,792	1,287	1,014	896	16,453	19.31%
2012	1,170	733	1,186										3,089	-81.22%
Utilities-Elec/Gas/Phon/TV-6														
2007	27,561	25,313	27,447	20,627	21,227	21,415	19,801	17,472	19,329	17,955	19,195	26,007	263,348	
2008	29,218	29,252	26,328	23,416	20,549	19,249	18,847	17,553	19,035	19,613	21,212	34,407	278,679	5.82%
2009	32,085	25,385	29,265	23,227	18,239	20,095	18,567	17,253	25,175	15,741	19,014	27,161	271,206	-2.68%
2010	25,134	23,407	27,314	20,012	18,881	23,231	17,730	17,504	20,291	16,410	18,948	27,713	256,575	-5.40%
2011	24,747	24,747	25,744	21,236	18,672	19,596	16,435	16,291	19,303	21,797	20,976	27,930	257,472	0.35%
2012	21,721	23,924	26,193										71,838	-72.10%
Grocery Stores-7														
2007	74,895	63,190	55,155	58,594	63,721	75,287	94,669	87,738	97,935	70,276	65,404	124,490	931,353	
2008	67,636	69,373	68,849	60,996	68,862	76,206	102,460	98,721	104,980	78,519	69,975	136,977	1,003,553	7.75%
2009	71,756	71,247	70,547	62,626	68,810	78,774	103,765	96,754	100,785	73,182	67,641	127,045	992,932	-1.06%
2010	66,942	69,350	71,746	61,250	67,815	81,894	105,345	100,276	102,079	76,521	69,895	130,353	1,003,466	1.06%
2011	73,127	74,128	73,302	65,411	66,944	82,582	106,843	106,647	109,138	79,097	71,822	135,097	1,044,137	4.05%
2012	70,845	74,316	72,510										217,672	-79.15%

Hotel/Motel/Lodging-8	January	February	March	April	May	June	July	August	September	October	November	December	Total	
2007	7,117	6,471	9,270	5,903	10,392	18,423	28,961	28,574	24,032	13,018	7,205	8,344	167,709	
2008	7,979	8,792	9,547	5,636	10,479	19,179	28,773	25,008	21,689	13,008	7,073	6,605	163,768	-2.35%
2009	5,341	6,026	7,919	4,902	10,403	19,426	24,884	22,467	20,383	9,740	4,464	5,304	141,259	-13.74%
2010	4,807	6,212	9,225	5,000	10,241	19,611	27,548	22,660	20,210	11,904	6,706	6,326	150,448	6.51%
2011	6,434	6,120	8,614	6,545	11,055	16,348	27,744	23,513	19,173	10,863	6,100	5,199	147,710	-1.82%
2012	4,469	6,009	6,277										16,756	-88.66%
Vehicle Sales/Parts/Service-9	January	February	March	April	May	June	July	August	September	October	November	December	Total	
2007	24,655	23,725	28,182	21,255	21,431	25,710	25,764	30,788	22,277	25,068	19,745	21,724	290,324	
2008	26,640	22,092	27,030	21,586	18,306	26,049	24,840	24,002	24,114	19,013	15,236	24,333	273,241	-5.88%
2009	23,503	22,431	22,860	14,032	15,321	19,426	25,386	24,969	20,081	19,811	14,011	17,717	239,549	-12.33%
2010	18,977	18,253	20,448	19,791	16,090	17,236	23,868	24,935	21,677	17,770	17,020	18,295	234,360	-2.17%
2011	22,102	18,425	23,553	15,463	14,502	19,493	25,403	26,751	22,477	16,745	15,951	15,016	235,881	0.65%
2012	20,208	17,184	22,436										59,828	-74.64%
Restaurant/Bar/Liquor Stores-10	January	February	March	April	May	June	July	August	September	October	November	December	Total	
2007	38,164	35,638	45,155	39,384	44,701	57,368	67,262	62,531	60,840	50,335	40,555	42,693	584,626	
2008	38,838	42,421	44,430	40,616	49,952	54,807	72,086	68,725	60,096	49,743	40,772	41,591	604,076	3.33%
2009	38,853	38,264	42,823	37,958	47,194	59,528	73,437	64,630	57,607	46,210	33,979	42,020	582,503	-3.57%
2010	36,651	38,484	43,120	37,039	44,091	54,180	72,679	61,555	54,086	46,800	38,274	40,415	567,374	-2.60%
2011	35,939	37,281	43,200	39,254	44,878	53,451	73,385	64,534	56,824	45,753	35,117	40,024	569,639	0.40%
2012	35,062	35,236	39,430										109,727	-80.74%
Specialty Shop/Stores-11	January	February	March	April	May	June	July	August	September	October	November	December	Total	
2007	33,718	19,261	26,296	22,750	26,805	34,759	36,882	46,281	36,106	28,077	22,108	34,271	367,315	
2008	26,996	17,157	19,996	16,146	20,246	28,997	33,632	42,978	34,712	22,697	19,243	30,024	312,824	-14.84%
2009	28,574	13,576	16,021	13,914	18,795	28,297	27,978	38,248	29,880	20,140	15,979	30,267	281,669	-9.96%
2010	23,278	14,166	16,789	15,965	19,229	25,274	30,614	40,726	25,859	20,714	19,690	27,851	280,156	-0.54%
2011	23,154	13,884	17,161	15,215	19,120	25,920	31,420	39,529	29,199	21,537	18,091	26,164	280,394	0.08%
2012	21,086	13,852	14,810										49,748	-82.26%
Miscellaneous Retail-12	January	February	March	April	May	June	July	August	September	October	November	December	Total	
2007	2,779	3,307	4,593	3,366	3,449	5,154	5,388	4,800	6,869	4,282	3,581	8,640	56,208	
2008	2,524	2,984	7,073	3,436	4,064	9,962	5,876	6,604	8,908	4,759	3,659	9,444	69,292	23.28%
2009	3,862	3,777	7,047	3,149	4,361	11,188	5,169	5,425	11,119	5,117	3,472	14,573	78,260	12.94%
2010	3,475	4,033	7,922	3,319	3,951	10,493	6,949	6,822	11,016	3,628	4,319	13,277	79,204	1.21%
2011	3,439	3,236	7,190	3,923	3,391	8,929	7,241	5,755	12,476	3,656	4,863	13,901	78,000	-1.52%
2012	3,325	3,662	7,734										14,721	-81.13%
Use Tax - Vehicles-13	January	February	March	April	May	June	July	August	September	October	November	December	Total	
2007	22,849	7,509	10,661	15,167	15,756	9,784	10,968	10,544	9,170	13,293	14,102	7,998	147,801	
2008	13,554	8,293	8,426	8,868	14,824	15,014	11,154	6,030	9,088	5,885	8,061	6,517	115,714	-21.71%
2009	4,658	3,749	7,039	6,834	4,868	8,117	7,279	6,896	9,768	6,761	6,608	9,709	82,287	-28.89%
2010	8,719	4,034	3,899	2,775	8,267	5,595	10,093	9,619	10,082	6,685	5,890	9,902	85,560	3.98%
2011	9,218	6,730	5,933	5,030	9,570	9,769	7,406	11,219	10,121	5,621	7,692	9,107	97,416	13.86%
2012	6,787	3,840	10,741										21,368	-78.07%
Use Tax - Bldg Mat'l-14	January	February	March	April	May	June	July	August	September	October	November	December	Total	
2007	28,927	4,545	1,064	11,600	15,975	583	6,663	9,485	6,012	13,776	15,415	(6,194)	107,851	
2008	85	(243)	949	2,106	4,894	1,739	23,009	8,934	8,586	(416)	4,807	(769)	53,679	-50.23%
2009	(179)	0	(519)	50,860	14,604	7,142	5,110	4,552	175	7,183	218	1,100	90,246	68.12%
2010	(919)	375	(3,067)	3,900	2,421	4,493	1,163	2,157	3,873	3,062	120	1,021	18,599	-79.39%
2011	0	0	2,305	81	740	2,409	350	(737)	2,603	(5,557)	(902)	11	1,302	-93.00%
2012	11	666	1,404										2,081	59.87%

**City of Gunnison
Sales & Use Tax Comparisons**

**05/07/12
03:10 PM**

Combined Total Sales Tax

	January	February	March	April	May	June	July	August	September	October	November	December	Total	
2007	274,488	234,477	267,703	245,692	280,377	355,040	394,576	386,016	359,292	296,951	251,618	355,439	3,701,668	
2008	261,825	247,315	270,640	231,073	273,583	337,484	392,282	387,980	362,168	283,982	243,424	361,753	3,653,509	-1.30%
2009	258,723	227,928	253,654	214,801	257,313	328,110	382,323	363,475	348,150	262,882	219,620	343,072	3,460,052	-5.30%
2010	233,616	225,969	257,416	214,630	249,566	327,639	389,926	366,847	335,098	266,234	242,514	344,108	3,453,563	-0.19%
2011	233,617	228,341	257,416	214,631	249,566	323,499	389,925	378,882	335,098	266,234	242,513	344,108	3,503,163	1.44%
2012	228,097	224,597	246,645	0	0	0	0	0	0	0	0	0	699,339	-80.04%

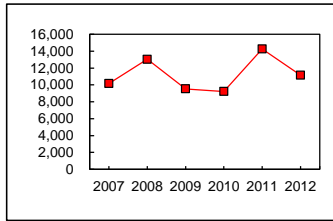
Combined Total Use Tax

	January	February	March	April	May	June	July	August	September	October	November	December	Total	
2007	51,776	12,054	11,725	26,767	31,731	10,366	17,631	20,029	15,182	27,069	29,517	1,804	255,652	
2008	13,639	8,050	9,375	10,974	19,718	16,754	34,162	14,964	17,674	5,469	12,867	5,748	169,394	-33.74%
2009	4,479	3,749	6,520	57,694	19,472	15,260	12,389	11,448	9,943	13,944	6,825	10,810	172,533	1.85%
2010	7,800	4,409	832	6,675	10,688	10,088	11,256	11,776	13,955	9,747	6,010	10,923	104,159	-39.63%
2011	9,218	6,730	8,237	5,111	10,310	12,178	7,755	10,482	12,724	64	6,790	9,119	98,717	-5.22%
2012	6,799	4,506	12,145	0	0	0	0	0	0	0	0	0	23,449	-76.25%

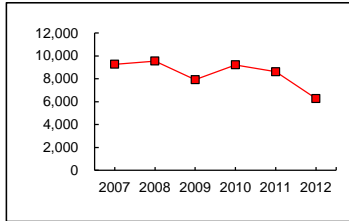
Combined Total Sales & Use Tax

	January	February	March	April	May	June	July	August	September	October	November	December	Total	
2007	326,264	246,532	279,428	272,459	312,108	365,406	412,206	406,046	374,474	324,020	281,135	357,243	3,957,320	
2008	275,463	255,365	280,015	242,046	293,301	354,238	426,445	402,944	379,843	289,451	256,291	367,501	3,822,903	-3.40%
2009	263,203	231,676	260,174	272,496	276,785	343,370	394,712	374,922	358,093	276,826	226,446	353,882	3,632,585	-4.98%
2010	241,417	230,378	258,248	221,305	260,254	337,727	401,182	378,623	349,052	275,981	248,524	355,031	3,557,722	-2.06%
2011	242,835	235,071	265,653	219,742	259,876	335,677	397,680	389,364	347,822	266,298	249,303	353,227	3,601,880	1.24%
2012	234,896	229,102	258,790	0	0	0	0	0	0	0	0	0	722,788	-79.93%

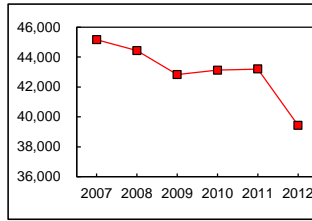
**City of Gunnison
Sales & Use Tax Comparison
March**



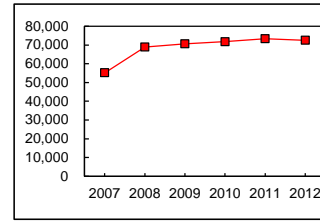
Gas/Conv	March
2007	10,160
2008	13,036
2009	9,538
2010	9,232
2011	14,276
2012	11,151



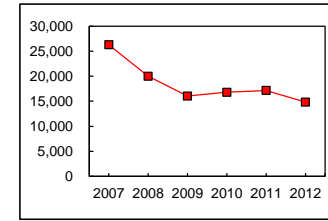
Lodging	March
2007	9,270
2008	9,547
2009	7,919
2010	9,225
2011	8,614
2012	6,277



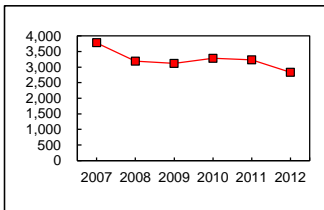
Rest/Bar	March
2007	45,155
2008	44,430
2009	42,823
2010	43,120
2011	43,200
2012	39,430



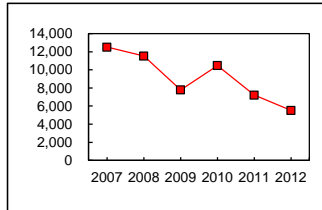
Grocery	March
2007	55,155
2008	68,849
2009	70,547
2010	71,746
2011	73,302
2012	72,510



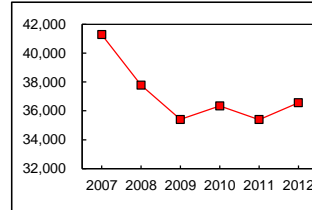
Spc Shps	March
2007	26,296
2008	19,996
2009	16,021
2010	16,789
2011	17,161
2012	14,810



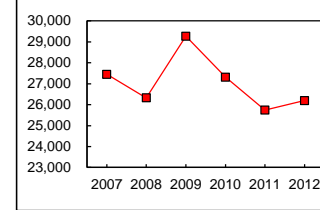
Apparel	March
2007	3,783
2008	3,190
2009	3,120
2010	3,281
2011	3,233
2012	2,833



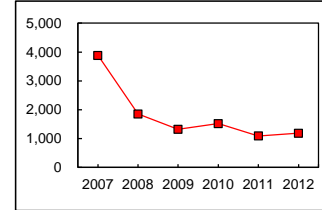
Bldg Matl	March
2007	12,498
2008	11,520
2009	7,786
2010	10,473
2011	7,210
2012	5,520



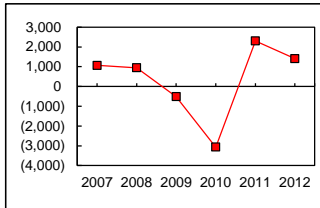
Dpt/Hrdwr	March
2007	41,283
2008	37,788
2009	35,402
2010	36,349
2011	35,398
2012	36,567



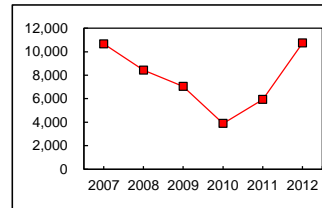
Utilities	March
2007	27,447
2008	26,328
2009	29,265
2010	27,314
2011	25,744
2012	26,193



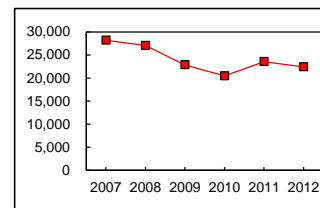
Furn/Apl	March
2007	3,879
2008	1,853
2009	1,323
2010	1,519
2011	1,091
2012	1,186



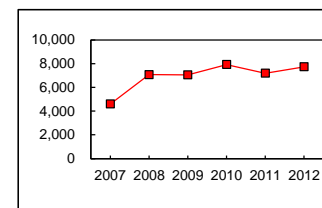
Use Tx-B	March
2007	1,064
2008	949
2009	(519)
2010	(3,067)
2011	2,305
2012	1,404



Use Tx-V	March
2007	10,661
2008	8,426
2009	7,039
2010	3,899
2011	5,933
2012	10,741



Veh Sales	March
2007	28,182
2008	27,030
2009	22,860
2010	20,448
2011	23,553
2012	22,436



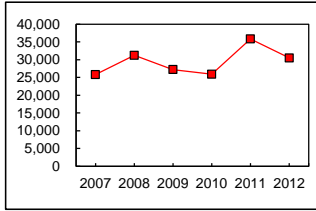
Misc	March
2007	4,593
2008	7,073
2009	7,047
2010	7,922
2011	7,190
2012	7,734

Prepared by: Dorene Elam, City of Gunnison, Accounting Clerk.

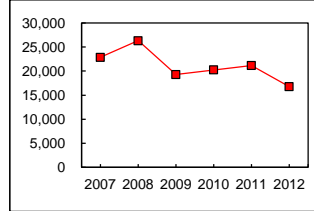
Businesses missing: Bluelg, BrickCellar, GunnFlyShop, PrecisionAlign, TicToc, Super8, HiCountryStation, EIParaiso, DaysInn, LastChance, Junebugs

Date: 05/07/12

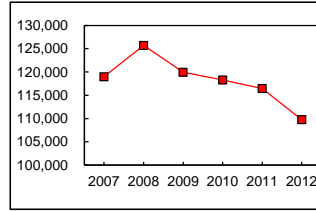
**City of Gunnison
Sales & Use Tax Comparison
Year to Date January - March**



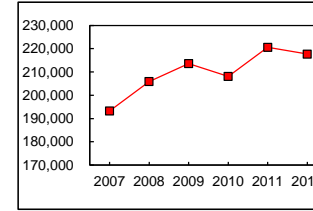
Gas/Conv	Yr-to-Date
2007	25,840
2008	31,237
2009	27,242
2010	25,923
2011	35,856
2012	30,495



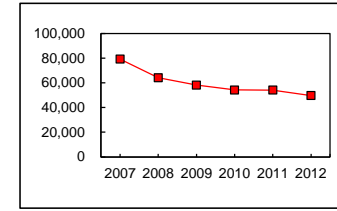
Lodging	Yr-to-Date
2007	22,858
2008	26,318
2009	19,287
2010	20,243
2011	21,169
2012	16,756



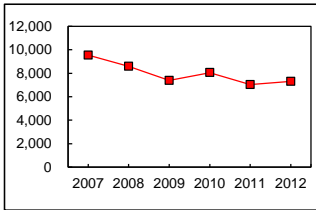
Rest/Bar	Yr-to-Date
2007	118,957
2008	125,688
2009	119,941
2010	118,255
2011	116,419
2012	109,727



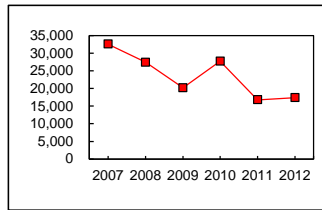
Grocery	Yr-to-Date
2007	193,241
2008	205,858
2009	213,550
2010	208,038
2011	220,557
2012	217,672



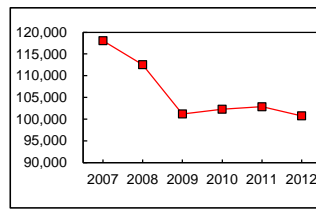
Spc Shps	Yr-to-Date
2007	79,276
2008	64,149
2009	58,171
2010	54,233
2011	54,199
2012	49,748



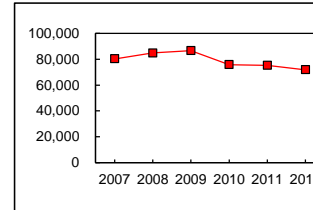
Apparel	Yr-to-Date
2007	9,550
2008	8,595
2009	7,391
2010	8,063
2011	7,041
2012	7,305



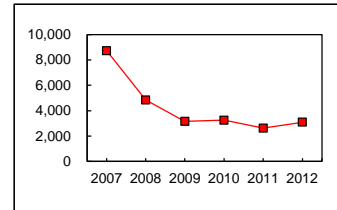
Bldg Matl	Yr-to-Date
2007	32,608
2008	27,435
2009	20,191
2010	27,762
2011	16,807
2012	17,434



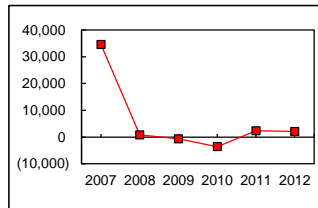
Dpt/Hrdwr	Yr-to-Date
2007	118,053
2008	112,516
2009	101,158
2010	102,273
2011	102,841
2012	100,727



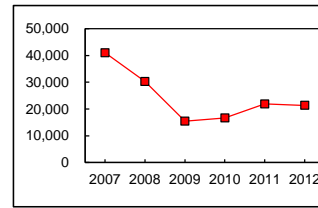
Utilities	Yr-to-Date
2007	80,321
2008	84,798
2009	86,735
2010	75,854
2011	75,237
2012	71,838



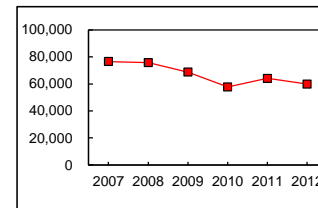
Furn/Apll	Yr-to-Date
2007	8,724
2008	4,842
2009	3,159
2010	3,249
2011	2,623
2012	3,089



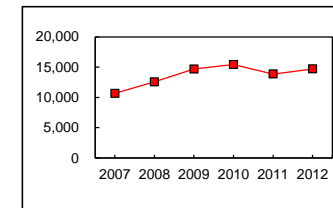
Use Tx-B	Yr-to-Date
2007	34,536
2008	791
2009	(697)
2010	(3,611)
2011	2,305
2012	2,081



Use Tx-V	Yr-to-Date
2007	41,019
2008	30,273
2009	15,446
2010	16,652
2011	21,880
2012	21,368

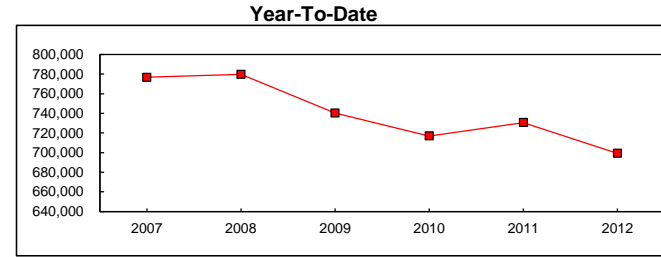
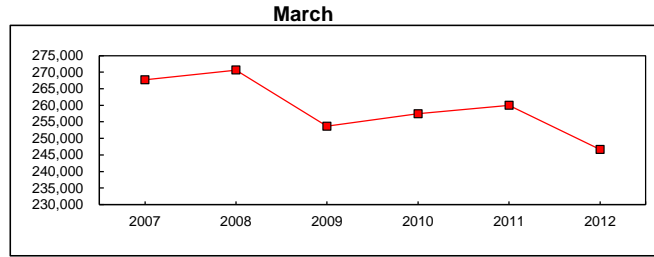


Veh Sales	Yr-to-Date
2007	76,562
2008	75,763
2009	68,794
2010	57,677
2011	64,079
2012	59,828



Misc	Yr-to-Date
2007	10,679
2008	12,581
2009	14,686
2010	15,430
2011	13,865
2012	14,721

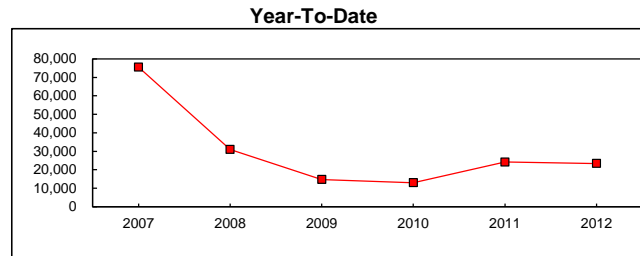
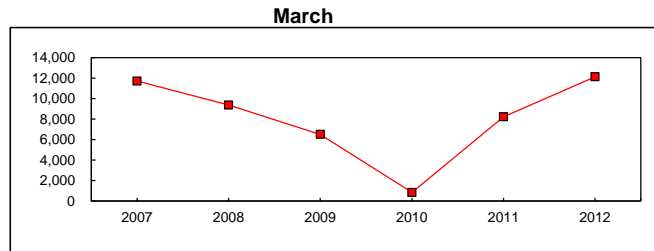
**City of Gunnison
Sales Tax Comparison**



	March	Increase \$\$	%
2007	267,703		
2008	270,640	2,937	1.10%
2009	253,654	(16,986)	-6.28%
2010	257,416	3,762	1.48%
2011	259,971	2,555	0.99%
2012	246,645	(13,326)	-5.13%

	YTD	Increase \$\$	%
2007	776,668		
2008	779,779	3,111	0.40%
2009	740,305	(39,474)	-5.06%
2010	717,002	(23,303)	-3.15%
2011	730,695	13,693	1.91%
2012	699,339	(31,355)	-4.29%

**City of Gunnison
Use Tax Comparison**

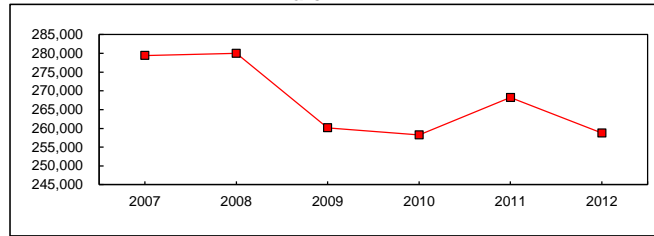


	March	Increase \$\$	%
2007	11,725		
2008	9,375	(2,350)	-20.04%
2009	6,520	(2,854)	-30.45%
2010	832	(5,688)	-87.24%
2011	8,237	7,405	890.09%
2012	12,145	3,908	47.44%

	YTD	Increase \$\$	%
2007	75,556		
2008	31,064	(44,492)	-58.89%
2009	14,748	(16,315)	-52.52%
2010	13,041	(1,707)	-11.58%
2011	24,185	11,143	85.45%
2012	23,449	(736)	-3.04%

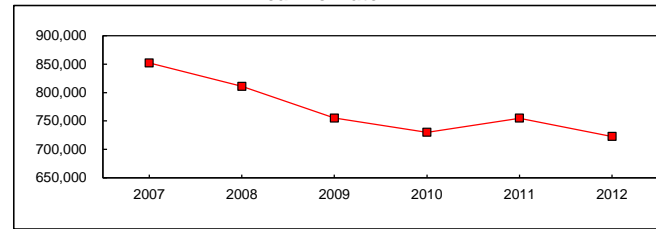
**City of Gunnison
Sales & Use Tax Comparison**

March



	March	Increase	
		\$\$	%
2007	279,428		
2008	280,015	587	0.21%
2009	260,174	(19,840)	-7.09%
2010	258,248	(1,926)	-0.74%
2011	268,208	9,960	3.86%
2012	258,790	(9,418)	-3.51%

Year-To-Date



	YTD	Increase	
		\$\$	%
2007	852,223		
2008	810,843	(41,381)	-4.86%
2009	755,054	(55,789)	-6.88%
2010	730,043	(25,011)	-3.31%
2011	754,879	24,837	3.40%
2012	722,788	(32,091)	-4.25%